



Java Verified Manual

CONTENTS

1. What is this manual for?	3
2. What is the Java Verified Submission Portal?	3
3. What is a Publisher ID and how do I use it?	3
4. How do I register to use the Submission Portal?	7
5. What do I need to do before submitting an application?	8
6. How do I submit an application to the Submission Portal?	9
7. How do I submit an application for R & D Signing?	13
8. How do I submit an application for Testing and Signing?	14
9. How do I find submissions on the Portal?	16
Annex A: Example script to sign multiple JAD/JAR pairs	17
Annex B: FAQ	19

1. WHAT IS THIS MANUAL FOR?

This manual provides step-by-step guidance on how to submit an application for verification via the Java Verified Submission Portal and gives an overview of the services provided by the Submission Portal once you have submitted an application. It takes you through all the steps involved in the verification process from obtaining a Publisher ID to the final online submission of your application for testing and signing. Please remember that all applications to be submitted must comply with the Java Verified test criteria. For full details of these test criteria and of supported devices, please visit our main website www.javaverified.com.

2. WHAT IS THE JAVA VERIFIED SUBMISSION PORTAL?

The Java Verified Submission Portal is *the* place to go for Java Verified technical services. The Submission Portal firstly takes you through a process that allows you to submit your application. Once your application has been submitted to the portal, it then allows you to access the following services:

- R&D Signing – signing the application for testing purposes
- Submitting the application for testing – getting applications tested and signed as “Java Verified”

3. WHAT IS A PUBLISHER ID AND HOW DO I USE IT?

3.1 What is a Publisher ID?

The prerequisite for using Java Verified services is to have a Publisher ID. The Publisher ID is a certificate that proves the existence of the developer and the company the developer works for and is used to sign the applications that are submitted to Java Verified for R&D, signing and testing. In other words, the Publisher ID is your passport to using Java Verified services. The key things to note about the Publisher ID are:

- It costs 200USD/year
- It is valid for one year. When it expires it can no longer be used and must be renewed.
- Signing with a Publisher ID carries no additional cost..
- An application signed with a Publisher ID cannot be installed to a live device (unless installed to a MIDP 1 device where the signature has no effect).

3.2 How do I obtain a Publisher ID?

To obtain a Publisher ID, you will need to pay the required fee and pass a simple vetting process, which includes the submission of documentation proving the existence of the company and your right to submit applications on its behalf.

To get a Publisher ID go here:

<https://www.trustcenter.de/cs-bin/PublisherID.cgi/en/155102>

For more details about what you are spending your money on, go to:
http://www.trustcenter.de/en/products/tc_publisher_id_for_symbian.htm

Note: Java Verified uses the Publisher ID provided by TC Trustcenter. So if you have already obtained a Trustcenter Publisher ID (for example from Symbian Signed) you can use this ID.

3.3 How do I use the Publisher ID?

After the successful purchase of the Publisher ID it will appear in the certificate store of your Web browser. In order to use the Publisher ID to sign applications, you will firstly need to port it to the Wireless Tool Kit or NetBeans. To do this, please follow the instructions below, which are based on the following set up:

- Internet Explorer version 6
- Java Platform Standard Edition 6, keytool.exe application
- Sun Java Wireless Toolkit 2.5.2 for CLDC
- NetBeans

The remainder of section 2 will cover the following steps, so if you have already done this, then please move ahead to section 3.

- Porting the Publisher ID to a .PFX file
- Copying the Publisher ID to a keystore
- Using the keystore file with Wireless Tool Kit
- Using the keystore file with NetBeans

3.3.1 Porting the Publisher ID to a .PFX file

1. In Internet Explorer, go to the last item in the “Tools” menu, which is called “Internet Options”. In “Internet Options” click on the “Content” tab and then select the “Certificates” button, which will allow you to view all certificates (see image 1 below).

2. Select the certificate issued by “TC Trustcenter” and press “Export” to start porting of the certificate.

3. You will be given a number of options when exporting the certificate from the Internet Explorer, so please follow this guidance:

- Include the private key with the certificate
- Use Personal Information Exchange format (.PFX)
- Include all certificates in the certification path
- No need to select strong protection
- No need to delete the private key if the export is successful
- Save the .PFX file to the same directory where the keytool.exe application is located. This should make the next steps easier.

If you have followed the instructions above, the certificate is now in a .PFX file and located in the same directory as the keytool.exe application.

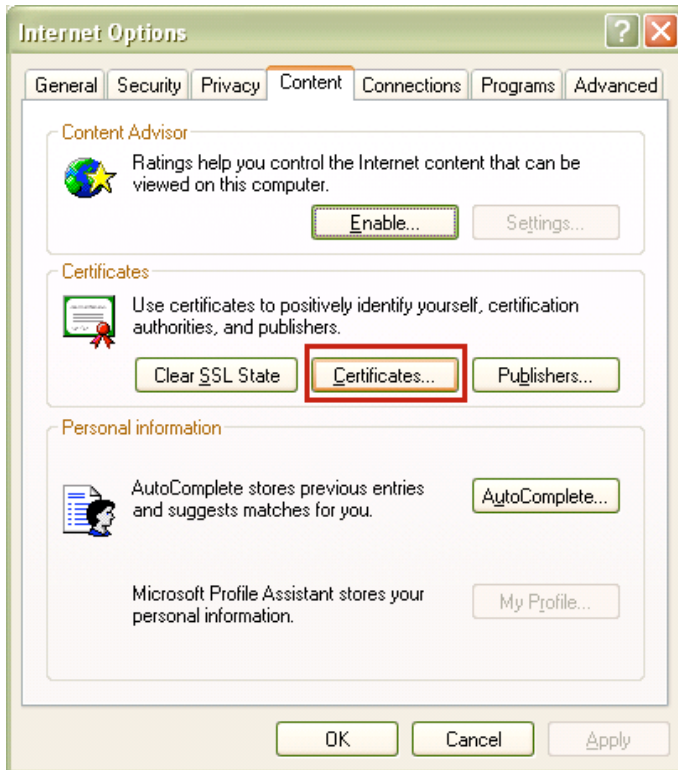


Image 1: The Certificates button

3.3.2 Copying the Publisher ID to a keystore

To copy the Publisher ID from the .PFX file to a specific keystore file, you will need to use the key tool application and follow these steps:

1. Open the command prompt and run the keytool.exe application. You will need to define a password and remember it, so please write it down somewhere safe.
2. Use the following command to copy the Publisher ID to a designated keystore file:

```
Keytool -importkeystore -srckeystore "The_Name_Of_The_PFX_file.PFX" -  
destkeystore Name_For_The_Key_store.jks -srcstoretype PKCS12 -  
deststoretype JKS
```

Note: As a shortcut, in some versions of Windows it may be possible to copy / paste the text above directly into a command window.

Now the Publisher ID should be in a designated keystore file.

You may notice that the Publisher ID has an odd alias. If this is the case, you can change this by following these steps:

1. Open the command prompt and locate the keytool.exe and the keystore-file.
2. Use the following command to define the current alias (*note: you will need the keystore password that you noted down earlier*):
`keytool -list -keystore Name_Of_The_Key_store.jks`
3. In the case where the keystore has only one item in it, the outcome from the keytool command will display the current alias in the first item of the output using brackets to distinguish the alias name.
4. The alias can then be changed with the following command:

```
keytool -changealias -alias "Enter_The_Alias" -destalias "New_Alias" -keystore Name_Of_The_Key_store.jks
```

3.3.3 Using the keystore file with Wireless Tool Kit

1. Start Wireless Tool Kit and run the utility called “Sign MIDlet Suite”
2. Under the “File” menu of “Sign MIDlet Suite” select “Load keystore” and then “from file”. This can be used to bring the Publisher ID to the use of the “Sign MIDlet Suite”. (*Note: When loading the keystore the keystore password is required*).
3. You will be given an option to select the security domain. This is not important (as it is not possible to sign applications with Publisher ID and install them to a device as the devices do not have the corresponding root certificate), so just keep things simple and select “minimum”.

Now the Publisher ID is available for signing the applications.

Note: Appendix A will show a potential script which can be used to sign multiple JAD/JAR pairs with Wireless Tool Kit and the Publisher ID.

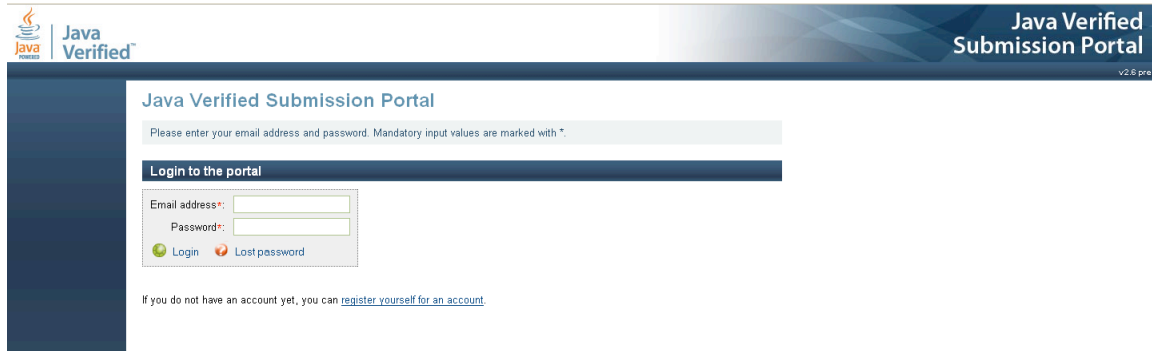
3.3.4 Using the keystore file with NetBeans

1. Launch NetBeans. In the “properties” window, select the “Signing” category.
2. Use the keystore manager to add a new keystore from a file (common file formats to import are “.jks, .ks, .keystore, .p12 and .pkcs12”)
3. After the keystore is imported it must be unlocked. When this is done check the “Sign Distribution” box, keystore and alias in the properties -> signing menu.

By selecting “Sign Distribution”, the application will be signed at build time using the Publisher ID.

4. HOW DO I REGISTER TO USE THE SUBMISSION PORTAL?

As with any new service, you will need to register to use it! Image 2 below shows you what you will see when entering the portal for the first time. You will need to click on the link “register yourself for an account”.

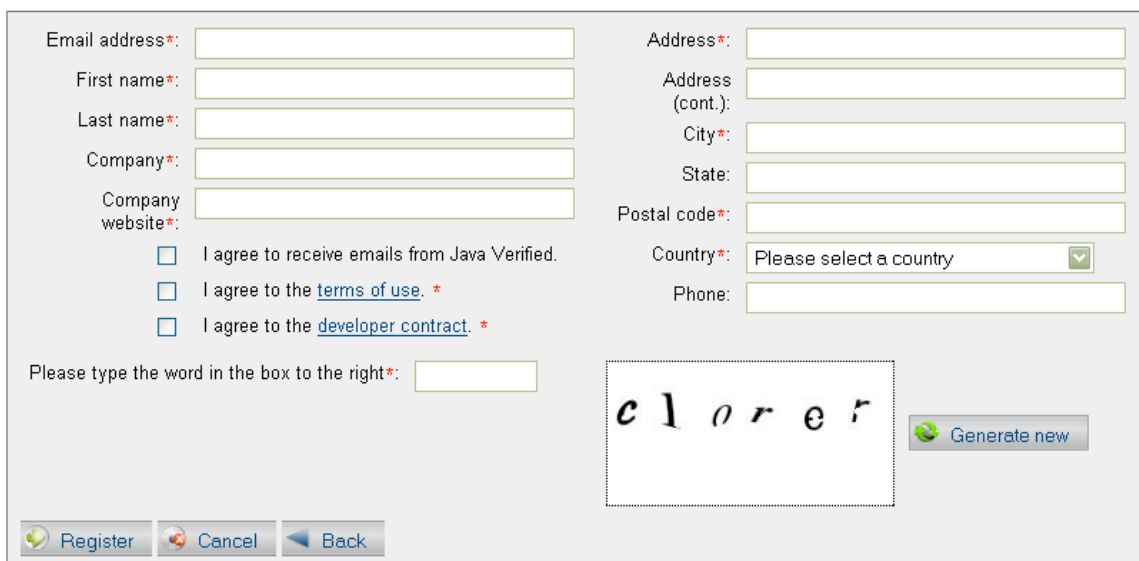


The screenshot shows the Java Verified Submission Portal login page. At the top left is the Java Verified logo. At the top right, it says "Java Verified Submission Portal" and "v2.6 pre". Below the header, there is a blue bar with the text "Java Verified Submission Portal". Underneath, a light blue box contains the instruction: "Please enter your email address and password. Mandatory input values are marked with *". Below this is a dark blue button labeled "Login to the portal". Underneath the button are two input fields: "Email address*" and "Password*", both with asterisks indicating they are mandatory. Below the input fields are two buttons: "Login" and "Lost password". At the bottom of the form, there is a link: "If you do not have an account yet, you can [register yourself for an account](#)".

Image 2: The login page of the Submission Portal

Note: We recommend that the person who registers to the Submission Portal is the same person who will submit applications to the Portal. Where possible, we also recommend that you set up one account for the whole company. To do this efficiently you should have one e-mail address that can be accessed by all the necessary people. This is because the account you use to submit applications will be the same account you use to track the progress of submissions. If there are several accounts which submit applications to Java Verified with the same Publisher ID, you will be unable to get an overview of all submissions via any one account.

The registration page is shown in image 3 below. All fields marked * must be completed in order for you to register.



The screenshot shows the registration page. It features two columns of input fields. The left column includes: "Email address*", "First name*", "Last name*", "Company*", and "Company website*". Below these are three checkboxes: "I agree to receive emails from Java Verified.", "I agree to the [terms of use](#). *", and "I agree to the [developer contract](#). *". The right column includes: "Address*", "Address (cont.)", "City*", "State", "Postal code*", "Country*" (with a dropdown menu showing "Please select a country"), and "Phone". At the bottom left, there is a CAPTCHA section: "Please type the word in the box to the right*:" followed by a box containing the word "clorer" and a "Generate new" button. At the very bottom, there are three buttons: "Register", "Cancel", and "Back".

Image 3, the required registration data.

The first step is to insert an email address, which will be used both as your login name and as the email via which you will receive all communication from the Submission Portal. We therefore suggest that you ensure you select an email address that is accessible to all those who will need to follow the progress of

Note: The box requesting your agreement to receive emails from Java Verified is to allow us to send you important information about your account and your applications. You will not receive spam.

Once you have completed the registration page, you will be sent a temporary password to the email address you have specified. You should use this password for the first login and will then be prompted to change this.

5. WHAT DO I NEED TO DO BEFORE SUBMITTING AN APPLICATION?

In order to make your experience of the Submission Portal as smooth as possible, there are three things to prepare before submitting an application:

- Certain details of how the application meets the testing criteria
- An application description
- Grouping JAD and JAR files

5. 1 The testing criteria

The Unified Testing Criteria define certain requirements which must be met before submission. Of course, the application must comply with all the test criteria, but there are certain details you will be required to provide at the time of the submission:

- Application characteristics in Chapter 3.1 of the criteria document:
 - A flow diagram of the application in a JPG or GIF file
 - Definitions of the different connections which the application has
- A completed questionnaire related to the questions in section 4.9 of the criteria document.

5. 2 Application description

Although the application description field can be left empty, if you enter a description at the submission stage, this will make it easier to find the submission at a later stage. We recommend that you use a description that is shared by the different versions of the same application.

5.3 Grouping JAD and JAR files

It is important to consider the option of grouping the application files (JAD and JAR files) before submitting application. The Java Verified Submission Portal allows a single JAD / JAR pair to be submitted or a ZIP file containing multiple JAD / JAR pairs. Therefore all of the JAD / JAR files belonging to the same application title can be grouped into one ZIP file and the group can have a unique name which is given at the time of the submission.

The grouping of JAD / JAR will make it easier to submit and find different versions of the same title. For example if title A has 10 different JAD / JAR pairs for multiple devices, grouping them will make submissions easier as the JAD / JAR pairs can share the same application flow diagrams and you will only need to provide one set of answers to the security questions.

6. HOW DO I SUBMIT AN APPLICATION TO THE SUBMISSION PORTAL?

6.1 The submission process

To submit your application (JAD/JAR pairs), you will need to go to the “Submission Home” page and then either click on the “Submit application for testing and signing” link in the main text or the “Submit Application” button in the left hand menu (see image 4 below). The window shown in image 5 will then appear.

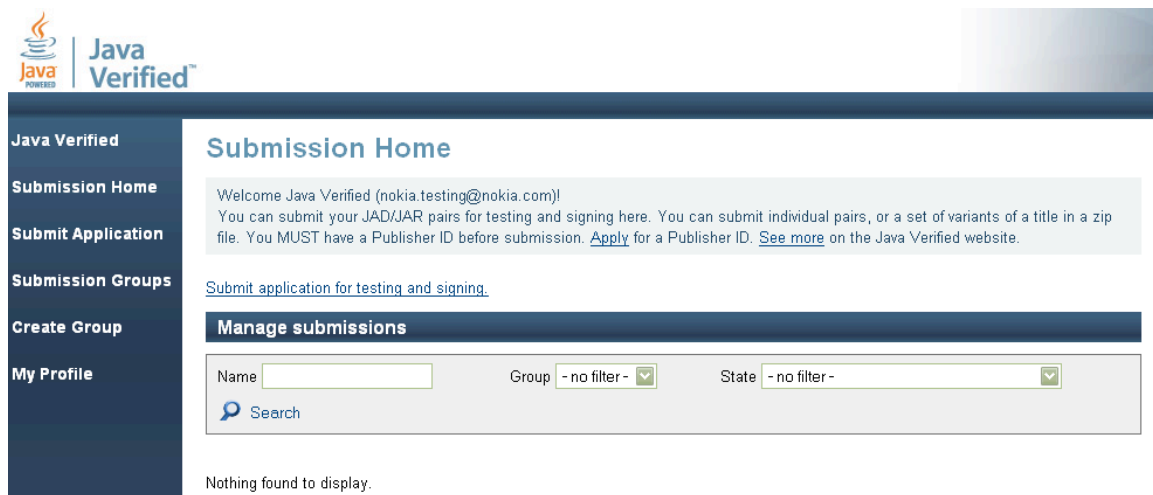


Image 4: The Submission home page

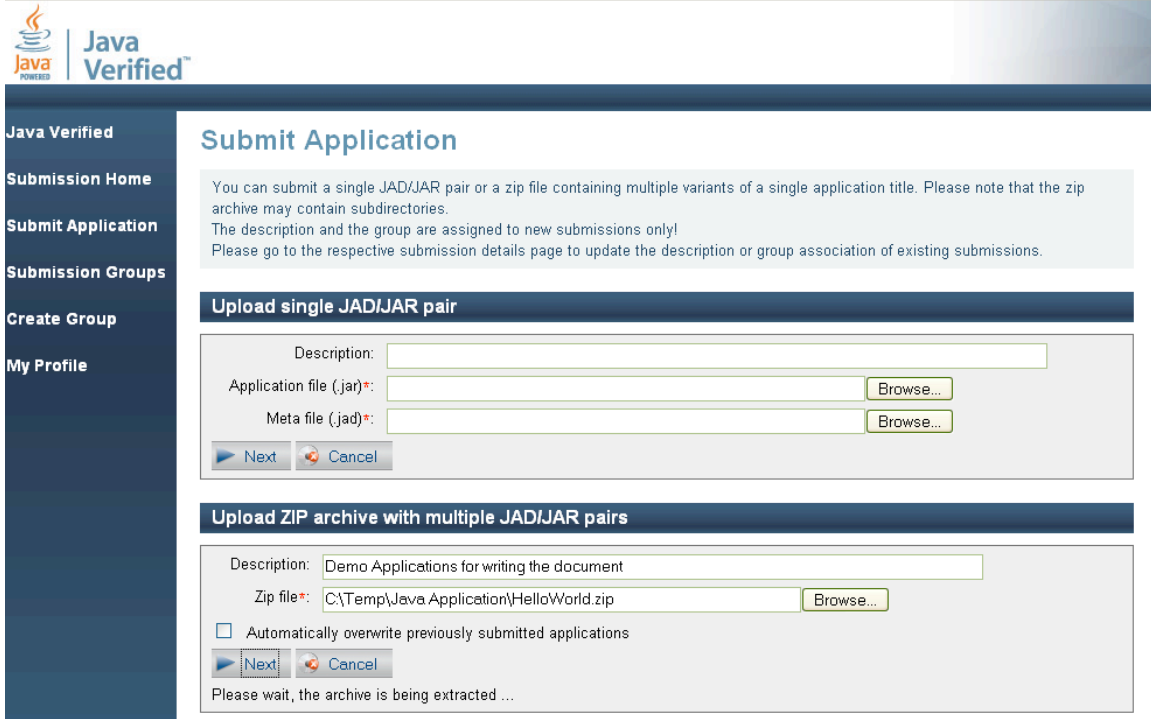


Image 5: Submitting an application.

In the example in image 5, a zip file full of test data is being uploaded using the lower box “Upload ZIP archive with multiple JAD/JAR pairs”. A single JAD / JAR pair can also be uploaded via the top box “Upload single JAD/JAR pair”.

As a ZIP file will contain many different kinds of JAD/JAR pairs, the Portal will read the material and see if it is at all acceptable. The page shown in image 6 will then display letting you know which files have been successfully uploaded and where there are errors.

This page will also prompt you to enter a “Group name” and “Group description” which will help you browse through your different submissions at a later date and find this particular one with ease.

Submitted zip file

Check the data presented at the table below and confirm if you want to create and update the respective submissions. The description and the group will be applied only to new submissions. Therefore those fields are disabled when no new signing set was detected at the upload archive.

Assign an existing group ...

Group:

... or create a new group and assign it

Group name:

Group description:

Action	Name	Group	Application state	Errors /Warnings
New	zip-upload-pp/HelloWorldMidlet-de	-	-	
New	zip-upload-pp/HelloWorldMidlet-en	-	-	
New	zip-upload-pp/Motorola/HelloWorldMidlet-en	-	-	
New	zip-upload-pp/Nokia/HelloWorldMidlet-en	-	-	
New	zip-upload-pp/Samsung/HelloWorldMidlet-en	-	-	
New	zip-upload-pp/SonyEricsson/HelloWorldMidlet-en	-	-	
Skipped	zip-upload-pp/invalidJAD/HelloWorld-en	-	-	Unable to parse the JAD file [zip-upload-pp/invalidJAD/HelloWorld-en.jad] provided for upload!
Skipped	zip-upload-pp/invalidSignature/HelloWorldMidlet-en	-	-	The signature is invalid. Perhaps the application has been modified after it has been signed. Please re-sign the application with your Publisher ID!
Skipped	zip-upload-pp/missingJAR/HelloWorldMidlet-en	-	-	Application file (JAR) is missing!

Image 6: The demo zip file errors and successes.

6.2 Managing your submissions

Your accepted submissions will then be visible on the Submission Home page as shown in image 7. As you can see, the box at the top of this page allows you to search for submissions and filter them by group name or status. In the lower listing, you can sort the information by the application “ID”, “name”, “group” etc. This listing also summarizes key information regarding the status of the application such as the pretest result, test house result etc.

By clicking on the ID number on in the left hand column of the listing, you can then view the details of a particular submission, as shown in image 8.

Submission Home

[Logout](#) [Change Password](#)

Welcome Java Verified (nokia.testing@nokia.com)

You can submit your JAD/JAR pairs for testing and signing here. You can submit individual pairs, or a set of variants of a title in a zip file. You MUST have a Publisher ID before submission. [Apply](#) for a Publisher ID. [See more](#) on the Java Verified website.

[Submit application for testing and signing.](#)

Manage submissions

Name Group State
[Search](#)

Id	Name	Group	Created at	Application data	Pretest result	R&D Signature	Test house result	Production signature
2314	zip-upload-pp/HelloWorldMidlet-de	Demo Data	2008-10-02 07:45	Incomplete	Missing	OK to proceed	Not available	Not available
2320	zip-upload-pp/HelloWorldMidlet-en	Demo Data	2008-10-02 07:45	Incomplete	Missing	OK to proceed	Not available	Not available
2326	zip-upload-pp/Motorola/HelloWorldMidlet-en	Demo Data	2008-10-02 07:45	Incomplete	Missing	OK to proceed	Not available	Not available
2332	zip-upload-pp/Nokia/HelloWorldMidlet-en	Demo Data	2008-10-02 07:45	Incomplete	Missing	OK to proceed	Not available	Not available
2338	zip-upload-pp/Samsung/HelloWorldMidlet-en	Demo Data	2008-10-02 07:45	Incomplete	Missing	OK to proceed	Not available	Not available
2344	zip-upload-pp/SonyEricsson/HelloWorldMidlet-en	Demo Data	2008-10-02 07:45	Incomplete	Missing	OK to proceed	Not available	Not available

Export options: [CSV](#) [Excel](#)

Image 7: The demo data displayed on the Submission home page.

Submission

State: Missing application data [Delete >>>](#)
Name: zip-upload-pp/Samsung/HelloWorldMidlet-en [Edit >>>](#)
Group: Demo Data [Change group >>>](#)

Application

Name: zip-upload-pp/Samsung/HelloWorldMidlet-en 1.2.0
Binary: Ok [Update application >>>](#)
Diagram file: Diagram file missing [Update diagram file >>>](#)
Questionnaire: Questions not processed [Answer questions >>>](#)
Pretest: Pretest missing [Pretest >>>](#)

R&D signature

R&D signature: Ready to request [Sign application >>>](#)

Test

Devices: Not available
Test: Not available

Signature

JV Signature: Not available

Image 8: The details of one submission.

As you can see, the details of a particular submission are split into five different sections:

- The “Submission” section gives the overall status of the application, the application name and group information, which can be changed.
- The “Application” section contains the details about the application, which application data is complete and which is missing. As discussed above, it shows that:
 - Each application must have a diagram file and completed questionnaire.
 - Each application must also go through the pretesting procedure, which is primarily about which device the application can run on.
- The “R&D Signature” section allows this to be, requested.
- The “Test” section gives information about how the testing went. A report can be downloaded from here.
- The “Signature” section allows the Java Verified application to be downloaded, once it has passed the testing procedures.

7. HOW DO I SUBMIT AN APPLICATION FOR R&D SIGNING?

R&D Signing is a service that signs applications to the Identified Third Party Protection Domain (formerly the Trusted Third Party Domain.) to enable them to be run on a device for testing purposes

In order to install the application the device needs to have the root certificate used by the Java Verified. To obtain this, please refer to the “Table of Supported Devices” which can be found on the main Java Verified website: www.javaverified.com.

Note: As discussed in section 3, in order to submit an application the application has to be signed with the Publisher ID.

To submit an application for R & D signing, please follow these steps:

1. Submit a JAD/JAR pair to the Submission Portal
2. On the Submission home page, click on the JAD/JAR pair that you would like to get R&D Signed.
3. On the submission details page under the “R&D signature” heading, select “Sign application”.
4. When the application is submitted, it can be downloaded from the “Submitted JAD/JAR pair details”-page. This step takes time, so please be patient.

Note: When installing the application, the signature in the application is valid on the day it was signed and for the preceding six days (central European time zone). This is why the date of the device must be confirmed to ensure it falls inside the period when the signature is valid.

To check the dates when the application can be installed:

1. Open the JAD file with a text editor (e.g. notepad)
2. Copy the contents of the “MIDlet-Certificate-1-1:” field (text starting from the colon and ending to the carriage return) and paste it to an empty text file.
3. Save the text file
4. Change the file extension to .cer
5. Open the file. The validity is presented in the “Valid from” field (see image 9 for an example)

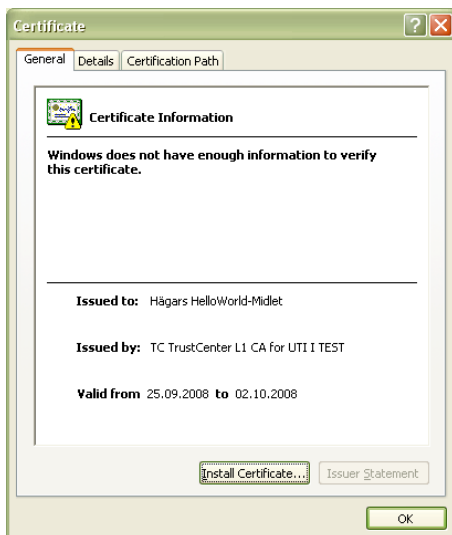


Image 9: Certificate information showing when the application is valid for installation.

Note: The R&D Signing is for testing purposes only. Do not sell a R&D Signed application!

8. HOW DO I SUBMIT AN APPLICATION FOR TESTING AND SIGNING?

Once your application has been signed with a valid publisher ID and you are sure it conforms to the test criteria, you can submit it to a test house for testing.

8.1 Submitting an application for testing

Before you submit an application for testing, please ensure that:

- You have submitted the application flow diagram with the application (One diagram will suffice for the applications in one Submission group).
- You have completed the “Questionnaire” section of the application data.

To submit an application for testing you then need to follow the steps below:

1. Submit the application to the portal as described above.
2. On the “Submission home” page, select the JAD and JAR pair which you want to have submitted to a test house
3. As part of the testing process, an automated pretesting will be conducted to check which screen size and JSRs the application uses. Based on the results of this pretest, the submission tool will indicate which devices the application can run on. The next step is therefore to select which device will be used to test the application using the "Select devices" option.
4. You then need to select your test house of choice by choosing "Submit for test" and selecting from the list.

8.2 The test results

When the testing is complete, an email will be sent to notify you that the application has been tested and the test report is available.

If you log in to the portal, you will find the results on the detail page for the application. If the application passed the testing, the signed application will also be available to download from this page.

8.3 What do I do if an application failed the testing?

In the event that an application fails the testing, it must be changed to fix the errors and resubmitted. Resubmission can be done via the “Update application links on the submission details page. Once the application JAD / JAR files have been updated and the device for testing is selected, the application can be submitted once again for testing to a test house of the choice.

9. SEARCHING SUBMISSIONS IN THE PORTAL

As highlighted in section 6, the Submission Portal offers you multiple methods to search your submissions for specific JAD / JAR pairs:

- By the name of the submission
- By group names
- By the status of the application

Furthermore, the resulting list of applications, can be sorted in different ways:

- ID
- Name
- Group
- Creation date
- By the status of the :
 - Application data
 - Pretesting result
 - R&D Signature
 - Test house result
 - Production signature

ANNEX A: EXAMPLE SCRIPT TO SIGN MULTIPLE JAD / JAR PAIRS

REM: By: Oscar Vivall 2008

REM: Script used to sign multiple JAD/JAR pairs

REM: batch file should be located in the same folder as the applications.

```
echo off
cls
```

```
set JADTOOLPATH=%1
set KEYSTORE=%2
set ALIAS=%3
set KEYPASS=%4
```

```
if NOT DEFINED JADTOOLPATH GOTO INFO
if NOT DEFINED KEYSTORE GOTO INFO
if NOT DEFINED ALIAS GOTO INFO
if NOT DEFINED KEYPASS GOTO INFO
```

```
IF NOT EXIST %JADTOOLPATH% (
    echo JadTool.jar does not exist
    echo.
    GOTO INFO
)
```

```
IF NOT EXIST %KEYSTORE% (
    echo Keystore does not exist
    echo.
    GOTO INFO
)
```

REM ** Loop though all Jad and jar files in the folder and use the JadTool to sign the files **

```
for %%a in (*.jad) DO (
    echo %%a
    type %%a | find "MIDlet-Jar-URL:" > tmp.txt
    for /F "tokens=2" %%i in ('type tmp.txt') DO (
        IF NOT EXIST %%i (
            echo %%i - ...Does not exist
            echo :=====:
        )
        if exist %%i (
            echo %%i

            java -jar %JADTOOLPATH% -addcert -alias
%ALIAS% -keystore %KEYSTORE% -inputjad %%a -outputjad %%a
            java -jar %JADTOOLPATH% -addjarsig -
keypass %KEYPASS% -alias %ALIAS% -keystore %KEYSTORE% -inputjad %%a -
outputjad %%a -jarfile %%i
```

```
echo Done.
```


ANNEX B: FAQ

Publisher ID

Q: What is a publisher ID?

A: A Publisher ID is a certificate, which validates the existence of a company. Think of it as a passport to Java Verified services.

Q: Where can I buy it?

A: TC Trustcenter is the Publisher ID provider. If you are located in China please contact WoSign.

Q: How much does it cost?

A: The annual fee is 200USD.

Q: How long is it valid for?

A: One year.

Q: Why do I need to sign the applications I submit with a Publisher ID?

A: This allows Java Verified to confirm the source of the application and that the applications have not been tampered with.

Q: I signed my application with a Publisher ID, so why does it not install to my device?

A: The MIDP2 specification prevents installation of applications, which are signed but where the signature cannot be verified such as in the case of Publisher IDs. For an application to install on a device, it must be signed with a certificate with a signature that can be verified with a certificate that resides in the device. Since Publisher IDs do not have a certificate in the devices, the application installation will not work.

Q: Do I also need to sign MIDP1 applications with a Publisher ID?

A: Yes. The source and integrity of every application is checked during submission.

Q: My Publisher ID is already in a .p12 file. What do I need to do?

A: A .p12 file can be used with the keytool application.

Q: Can I use my TC Trustcenter Publisher ID, which I purchased for Java Verified with Symbian Signed?

A: Yes as long as it is still valid.

Q: I have a Publisher ID from TC Trustcenter which I use with Symbian Signed. Can I use that with Java Verified?

A: Yes as long as it is still valid.

Java Verified Submissions Portal

Q: What is the Java Verified Submissions Portal?

A: It is a portal for submitting applications and managing submissions to different Java Verified services.

Q: What is a group?

A: A group is a common name to a group of JAD/JAR pairs.

Q: When I submit an application I get an error message: "Application is not signed with a valid Publisher ID certificate. Please sign the application with your Publisher ID!", what is wrong?

A: It can mean one of three things: (i) Something went wrong when the application was signed with the Publisher ID. We therefore recommend you resign the application; (ii) the Publisher ID is not valid for Java Verified; please purchase [a valid Publisher ID](#); (iii) The Publisher ID is no longer valid.

Q: When I submit an application I get an error message: "Unable to parse the JAD file [Name_of_the_JAR.jar] provided for upload!", what is wrong?

A: Please check that you have defined a proper JAD file.

Q: When I submit an application I get an error message: "No certificate found in JAD file. Please sign the application with your Publisher ID!". What is wrong?

A: The application has not been signed with a Publisher ID. Please sign the application with a valid Publisher ID.

R&D Signature

Q: What is R&D Signature intended for?

A: The intention is to offer a possibility for developers to test how the application behaves on a live device after it has been signed. The signature is for testing purposes only, not for commercial applications.

Q: Why is the R&D Signature valid only for 7 days?

A: The intention is to ensure that R&D signed applications are not sold or distributed further.

Q: Why cannot I install an R&D Signed application to a live device?

A: There are two reasons why the installation fails: (i) The signature in the application is not valid. Please confirm that the date and the time of the device are in the range when the application signature is valid; (ii) Please confirm that the device has the UTI root certificate in it. The list of supported devices on www.javaverified.com gives this information.

Q: How do I know when the R&D Signature is valid?

A: Please use the following steps:

1. Open the JAD file with a text editor
2. Copy the contents of the "MIDlet-Certificate-1-1:" field (text starting from the colon and ending to the carriage return / line feed) and paste it to an empty text file.
3. Save the text file
4. Change the file extension to .cer
5. Open the file, the validity is presented in the "Valid from" field.

Q: Will my R&D Signed application stop from running when the certificate validity period is over?

A: No. The date is validated only at the installation of the application.